

Product range overview brochure

Utility location and inspection equipment



Contents

RD7100 & RD8100 – Precision Cable and Pipe Locators	3
PCMx – Pipeline Current Mapper system	4
C.A.T4 and Genny4 – Cable Avoidance Tools	5
SuperCAT4+ and T1 transmitter range – Cable Avoidance Tools	6
Lexxi T1660 – Time Domain Reflectometer	7
RD1100 and RD1500 – Ground Penetrating Radar systems	8
Metal and Magnetic Locators	9
P340 flexiprobe system	10
P350 flexitrax system	11

RD7100™ & RD8100™ Precision Cable and Pipe Locators

Optimum precision for damage prevention



Accurately locating and marking buried assets ensures minimum downtime during repair or maintenance activities. It also prevents damage, which can be costly for both excavator and utility owner.



- **Precision by design:** A unique arrangement of five custom-manufactured, precision-ground antennas deliver locate accuracy and repeatability. Tailor the locate performance to the task in hand with up to 5 locate modes.
- **Peak+ mode:** Combine the accuracy of Peak locating with the rapid ground coverage of Guidance arrows. A single key press lets you check for distortion by comparing Null with Peak.
- **Configurable frequencies:** Up to 5 additional frequencies can be programmed into all RD8100 cable and pipe locators to match it to the signals found on your target networks.
- **Integrated GPS** and usage-logging options automatically generate data for customer reports, or in-house quality and safety audits to promote best working practices.

PCMx™ Pipeline Current Mapper system

Optimum precision for easier, faster pipeline surveying

Working alongside industry experts, Radiodetection pioneered the first Pipeline Current Mapper over 20 years ago. PCMx builds on this pedigree, harnessing the power of Radiodetection's most advanced locator technologies to deliver faster results, simultaneous survey measurements, and integrated GPS positioning.



PCMx Faster pipeline surveys to prevent corrosion

- **Ergonomic design:** Light-weight balanced locator for user comfort during long surveys.
- **Choice of transmitters:**
 - Tx-25:** Battery powered Tx-25PCM transmitter provides extra portability and flexibility in the field.
 - Tx-150:** High powered transmitter for long range surveys.
- **Simultaneous surveys:** Gather voltage gradient and current attenuation data in one pass of the pipeline to reduce survey time.
- **2 in 1 functionality:** Removal of foot gives user a fully featured RD8100 PDLG locator.



C.A.T4™ and Genny4™

Cable Avoidance Tools – detect more, faster, smarter, safer



A comprehensive range of Cable Avoidance Tools helping professionals to drive best locating practice, to reduce the number of cable strikes, and to dig more safely at a competitive cost of ownership.

- The C.A.T4 locator and Genny4 transmitter are easy to adopt and use, with minimal impact to your digging operations.
- Simultaneous dual frequency technologies give greater assurance in finding all buried services without adding complexity for users.
- Save time with Avoidance Mode™, which scans for Power, Radio and Genny signals simultaneously.
- Optional usage logging and GPS built-in. Data captured can evidence task completion or be used to identify training needs.



SuperCAT™ 4+ and T1 transmitter range

Utility-specific range for finding telecom & power cables, sondes and CPS protected pipes



A suite of Locator and Transmitter products targeting specific buried assets using a selection of passive, sonde and active frequencies.



- For oil and gas pipes using a Cathodic Protection System, the **CPS** model can locate the rectified signal without needing an additional transmitter.
- The **S** model locates a wide range of sonde frequencies that can be matched to the challenges of finding water and drain pipes.
- **SuperCAT4+** can be used to locate a wide set of active frequencies to support the detection and tracing of different cable types in varied environmental conditions.

Lexxi™ T1660 Time Domain Reflectometer

Innovative, economic cable fault locator for metallic cables

Radiodetection's Lexxi T1660 TDR offers innovation and economy, enabling a step-change in productivity.

Radiodetection has created Lexxi T1660 by incorporating easy-to-hold ergonomics and installing a unique TDR engine and a 3.5" color back-lit display.

The result is a cable tester whose 1% distance accuracy and resolution gives technicians the tool they need to find faults quickly and accurately.

The Lexxi T1660 is suitable for analysing all metallic cables consisting of at least two metallic elements, one of which can be the armouring or the screen. Cable types include CATV, twisted pair telecom, Ethernet and even LV power cables.



Features

- Large, color display
- 1% fault location accuracy
- 0.5m dead zone
- 6km, 19000' maximum range
- 7m, 23' minimum display range
- 11 range settings
- Operates from Alkaline or NiMH rechargeable batteries
- 12 hours typical battery life time (alkaline)
- User selectable Power Down time
- Selectable cable impedance
- VoP adjustable from 1% to 99%
- 100Ω Twisted Pair Alligator Clip cables included as standard
- Optional modules, including Category IV mains Blocking Filter, for twisted pair, coaxial and power cable use make the Lexxi T1660 suitable for multiple industries and applications

Radiodetection's RD1100™ and RD1500™ Ground Penetrating Radar systems

Innovative tools for finding buried utilities

RD1100

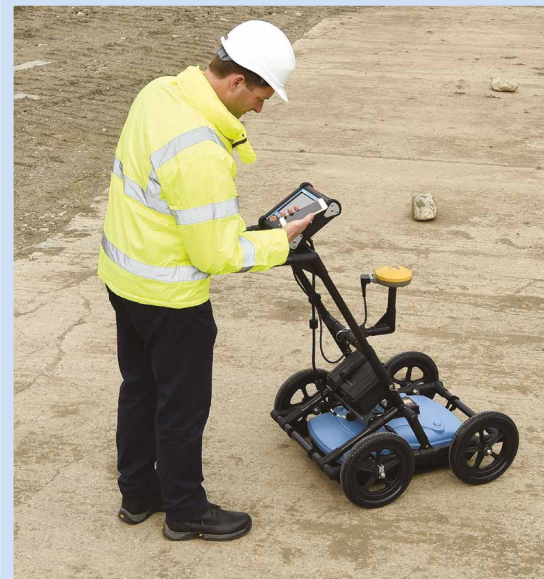
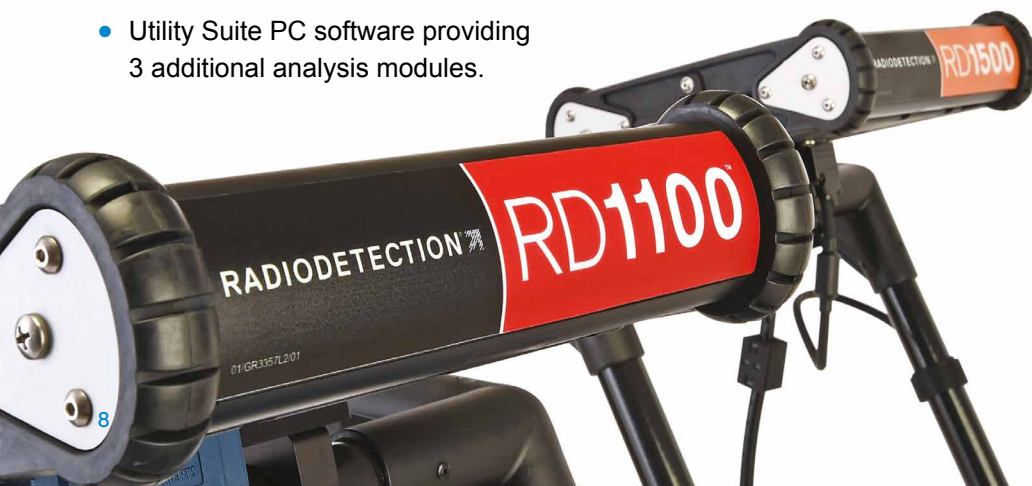
- GPR Line View data
- Easy screenshot capture
- Internal memory
- Email directly using on-board Wi-fi
- USB for additional data transfer option
- Internal GPS data for integrating into geo-referencing software

RD1500

- Adds highly intuitive Depth Slices
- FrequenSee™ technology to enhance small/shallow, medium or large/deep targets

Options include:

- External GPS for higher positional accuracy
- Enhancement package offering EKKO Project PC software for additional analysis and additional on-board memory
- Utility Suite PC software providing 3 additional analysis modules.



Metal and Magnetic Locators

Designed to provide the best performance in magnetic metal location in the industry

A worldwide leader in designing and manufacturing underground magnetic locators for over half a century, together with our metal detector, we have the location of buried metal objects covered.

Find these and more underground:

- Surveyors pins
- Steel pipe joints
- Kerb and valve boxes
- Manhole covers
- Reinforced septic tanks
- Steel enclosures
- Well casings
- Unexploded Ordnance



P340 flexiprobe™ system

Rugged pushrod camera equipment, backed by comprehensive service and support

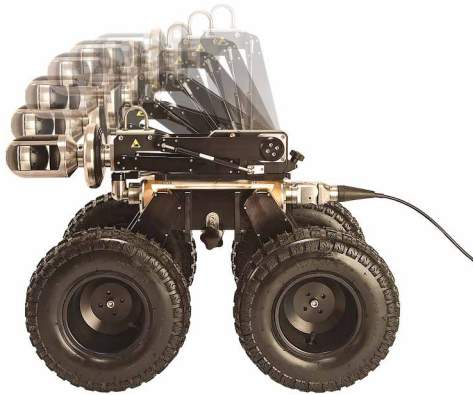
P340 flexiprobe system

- Super-flexible plumbers system for residential and commercial use
- Rod lengths from 100' to 500'
- Tilt and go wheeled reel design (easy transportation)
- 1", 1.23" and 2" cameras interchangeable between all 5 reels
- All cameras sealed to 150 pounds of external pressure
- Pinpoint location and depth without compromising bend performance
- Universal command module
- Compatible with P350 Mainline Series Inspection Cameras



P350 flexitrac™ system

Modular video inspection equipment, backed by comprehensive service and support



P350 flexitrac system

- Easily Portable
- Crawler options for inspecting pipes from 6" - 60"
- Rugged design built for durability
- Straight View, Pan & Tilt, and Pan Tilt Zoom Cameras
- Universal command module can be used with both P350 and P340 systems
- Energy efficient system drawing less than 3 Amps
- Vehicle installation options



Visit www.radiodetection.com

Global locations

Radiodetection (USA)

28 Tower Road, Raymond, Maine 04071, USA

Toll Free: +1 (877) 247 3797 Tel: +1 (207) 655 8525 rd.sales.us@spx.com

Pearpoint (USA)

39-740 Garand Lane, Unit B, Palm Desert, CA 92211, USA

Toll Free: +1 800 688 8094 Tel: +1 760 343 7350 pearpoint.sales.us@spx.com www.pearpoint.com

Radiodetection (Canada)

344 Edgeley Boulevard, Unit 34, Concord, Ontario L4K 4B7, Canada

Toll Free: +1 (800) 665 7953 Tel: +1 (905) 660 9995 rd.sales.ca@spx.com

Radiodetection Ltd. (UK)

Western Drive, Bristol, BS14 0AF, UK

Tel: +44 (0) 117 976 7776 rd.sales.uk@spx.com

Radiodetection (France)

13 Grande Rue, 76220, Neuf Marché, France

Tel: +33 (0) 2 32 89 93 60 rd.sales.fr@spx.com

Radiodetection (Benelux)

Industriestraat 11, 7041 GD 's-Heerenberg, Netherlands

Tel: +31 (0) 314 66 47 00 rd.sales.nl@spx.com

Radiodetection (Germany)

Groendahlscher Weg 118, 46446 Emmerich am Rhein, Germany

Tel: +49 (0) 28 51 92 37 20 rd.sales.de@spx.com

Radiodetection (Asia-Pacific)

Room 708, CC Wu Building, 302-308 Hennessy Road, Wan Chai, Hong Kong SAR, China

Tel: +852 2110 8160 rd.sales.asiapacific@spx.com

Radiodetection (China)

13 Fuqianyi Street, Minghao Building D304, Tianzhu Town, Shunyi District, Beijing 101312, China

Tel: +86 (0) 10 8146 3372 rd.service.cn@spx.com

Radiodetection (Australia)

Unit H1, 101 Rookwood Road, Yagoona NSW 2199, Australia

Tel: +61 (0) 2 9707 3222 rd.sales.au@spx.com

Radiodetection is a leading global developer and supplier of test equipment used by utility companies to help install, protect and maintain their infrastructure networks.

Copyright © 2018 Radiodetection Ltd. All rights reserved. Radiodetection is a subsidiary of SPX Corporation. Radiodetection, Pearpoint, Schonstedt, RD8100, RD7100, C.A.T4, Genny4, SuperCAT, PCMX, Lexxi, RD1100, RD1500, flexiprobe and flexitrac are trademarks of Radiodetection in the United Kingdom and/or other countries. The Bluetooth word, mark and logos are registered trademarks of Bluetooth SIG, Inc. and any use of such trademarks by Radiodetection is under license. Due to a policy of continued development, we reserve the right to alter or amend any published specification without notice. This document may not be copied, reproduced, transmitted, modified or used, in whole or in part, without the prior written consent of Radiodetection Ltd.