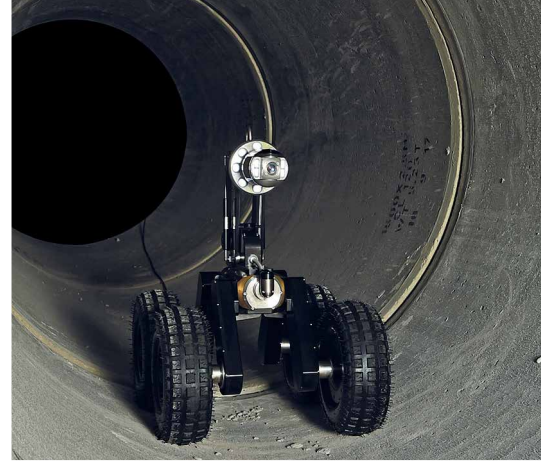


P350 flexitrac™ crawler system

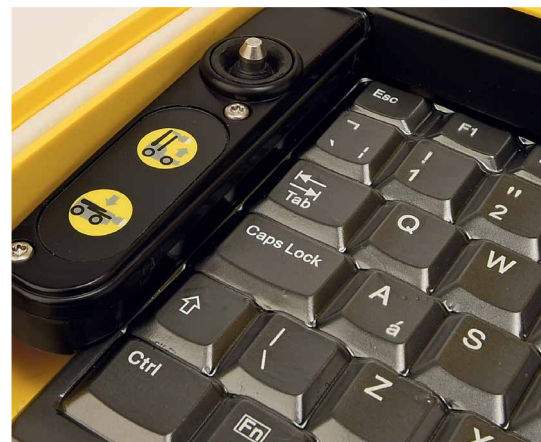
Versatile, modular and portable video inspection system



Pearpoint's P350 flexitrax combines a portable and modular crawler system with big-pipe inspection capabilities



Powered elevator and cradle enables inspection of pipes up to 60" / 1500mm in diameter.



Joystick camera and crawler controls provide intuitive operation, with common controls placed at hand.



Directly connect a P340 pushrod reel to the P350 drum, and switch from one camera image to the other with a simple key press.

The P350 flexitrax system offers features the simplicity and ease of transport of a pushrod system while delivering the functionality and performance associated with more complex and expensive crawler systems.

The modular and weatherproofed design enables operators to rapidly customize the flexitrax system for any task that they need to undertake.

Crawler system operators often face a choice between limited but portable systems, or complex and bulky systems for bigger pipes.

Pearpoint's P350 system, featuring intuitive joystick controls and a remote controlled powered elevator option, delivers a durable, modular system that is capable of centered inspection in large pipes, but is also highly portable for easy transport.

Modular and flexible

The P350 is a truly modular system, designed to meet the tough requirements of inspection environments.

Tailor the system to meet your requirements. Choose between a cost-effective manual cable drum or an advanced powered drum, each with up to 1000' / 305m of cable.

Choose from three interchangeable cameras and two powerful crawlers that are designed to withstand the most challenging sub-surface conditions.

A wide choice of wheels, elevators and tires optimize the downhole equipment to suit the pipe network being surveyed.

Compatibility with the P340 flexiprobe® pushrod enables operators to work in pipes as small as 1 1/4" / 32mm in diameter, while the system elevators and lighthouse enable compliant surveys in pipes up to 36" / 900mm in diameter, and plenty of lighting to go larger.

Survey a broad range of pipe sizes

The P350's crawlers and accessories deliver survey compliant centering in pipe ranges from 4" / 100mm and up to 36" / 900mm

The remote controlled elevator simplifies operation in the field – The system crawler can be deployed through smaller entry points in its lowered state and then raised to correctly fit in the pipe being surveyed, and the system can be temporarily made smaller to maneuver around obstructions during surveys.



Simple to operate

Intuitive joystick control over crawler and camera functions and dedicated one-touch controls make the P350 system easy to use, and lets you drive any drum, crawler and camera combination.

A full PC-style keyboard makes rapid reporting easy – and provides shortcuts to directly access advanced digital features.

The command module also provides Mimic® display – an on-screen tool that indicates where the system camera is pointing, and provides a simple way to direct its movement.

Integrated push rod functionality

P340 flexiprobe pushrod reels and cameras can be connected directly to the flexitrax system, allowing you to switch from crawler to pushrod operation at the touch of a button - no need to change connections or provide an extra power source for the pushrod.

When operating as a pushrod system, the P350+ controller, with built-in Li-Ion batteries, can be mounted on top of the pushrod reel – easy to transport and no need to find mains power.

The P340 flexiprobe range offers a choice of 3 rugged cameras (1" / 25mm, 1 1/4" / 32mm and 2" / 50mm) and 4 different reel sizes (100' / 30m to 500' / 150m) with different rod flexibilities and sondes to best suit your application.

Easy to transport and use

The modularity of the P350 flexitrax system enables a range of transport options. The system can be van or truck mounted, yet is easily dismounted to be wheeled on-site using the ergonomic barrow design, allowing you to reach access points beyond the range of your vehicle. Once on site, the system is quick and easy to set-up and deploy.

The rugged command module can be mounted directly on the drum or pushrod reel, or fitted where convenient at a distance of up to 150' / 50m from the drum or fitted where convenient.

Reliability where you need it

The P350 flexitrax is engineered to operate in a wide range of operating environments.

The tough, light-weight command module, drum and pushrod reels provide a durable buffer between the elements and your survey data, with a weatherproof (IP53) protection rating. The crawlers and cameras can operate fully submersed and are water resistant (IP68) to depths of up to 330' / 100m.

Cable connections are made quickly and reliably thanks to quick locking, robust fittings, designed specifically for use in difficult environments.

The command module stores survey data directly to solid state USB memory sticks or Compact Flash. Solid-state non-volatile memory means there are no moving parts, so your files are secure and less vulnerable to shock damage and power outages.

The crawlers are constructed from brass and stainless steel and are built with a single or twin 50W motor configuration, powerful enough to move through almost any pipeline system.

Simple, fast service and maintenance

The P350 flexitrax system is designed and built for continuous operation and easy maintenance. Operators can carry out many common repairs on-site, with no need for complex pressurization or sealing kits.



Pearpoint's global service network provide comprehensive service and repair with rapid turn-around times.

Clear, high quality imaging

The P350 flexitrax system offers a choice of three high-resolution crawler cameras (Forward View, Pan & Tilt or Pan & Tilt with 10x Optical Zoom); each with ultra-bright, white LED lighting for use across different pipe materials. An optional external lighthouse provides additional lighting for very large or dark pipes, ensuring clarity of view.

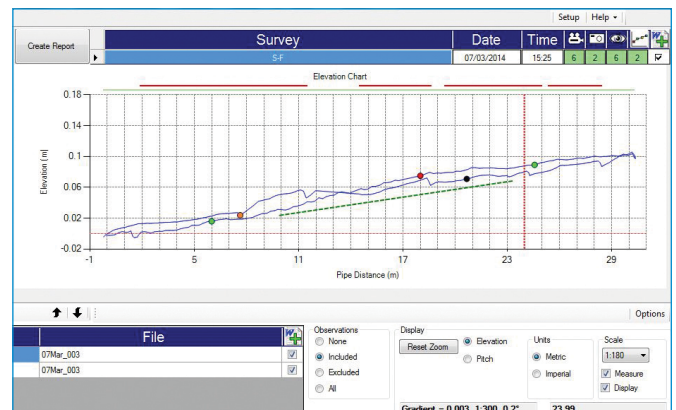
A powerful digital video platform delivers a clear picture and a long, maintenance-free life. The digital video is displayed on the P350 flexitrax command module's ultra-bright, 200mm (8") industrial grade TFT screen.

The command module allows you to zoom and rotate photos and live or recorded digital video in real-time.

Comprehensive on-site reporting

The P350 command module offers a customizable built-in reporting system, capable of creating and exporting detailed MSCC5 compliant drain or inspection chamber survey reports. The integrated sensitive inclinometer and the multi-frequency sonde allow users to map pipeline topography easily and efficiently.

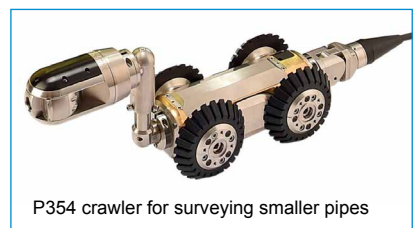
Use the HTML report creator or XML output capabilities of the command module to document all your work, on site with no need to use a PC or laptop on site.



Use the FlexiSight™ Manager PC software to import and manage all your surveys' digital data on a PC or laptop. Data can be retrieved easily using USB sticks, or by plugging the controller directly into a spare USB port.

Review and edit your work and create customizable MS Word or PDF reports of your surveys, including pipe graphs. Use the optional inclination module to produce inclination measurements of the drain surveyed.

P350 flexitrax crawler system options

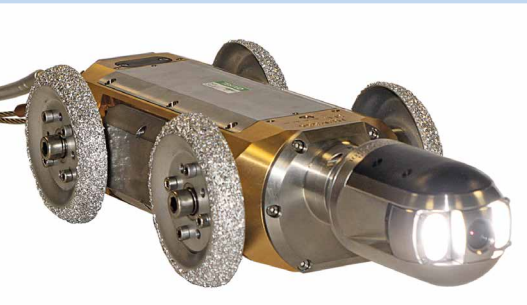




Pendant controller provides convenient downhole controls during deployment and retrieval.



Auxiliary lighthead provides additional lighting for large or dark pipes.



Abrasive 'rasp wheels' provide improved traction in relined or slippery pipe surfaces.

Accessories enhance system capabilities

Due to its modular design, the P350 system can be rapidly tailored to suit the needs of specific applications or inspection tasks. The system can be easily upgraded as new functionality is released.

Laser pipe profiling

When used with compatible Laser Scanning software, the P350 Laser Profiler accessories provide operators with detailed pipe measurements such as deformation, internal diameter and expected capacity simplifying tasks like adoption or pre/post rehabilitation surveys.

The variable laser profiler can project a circular ring in pipes as small as 4"/100mm, and in pipes over 3'/1m diameter from a single device.

Laser profilers can be fitted to the P350 Pan & Tilt and Pan, Tilt and Zoom cameras.



Tools to rapidly deploy crawlers and protect system in use

Simple and easy to use custom deployment tools can accurately position the system crawlers in a drain or culvert, while Pearpoint's cable deployment rollers protect the system cable from damage caused by rubbing against sharp access ports or pipe edges.

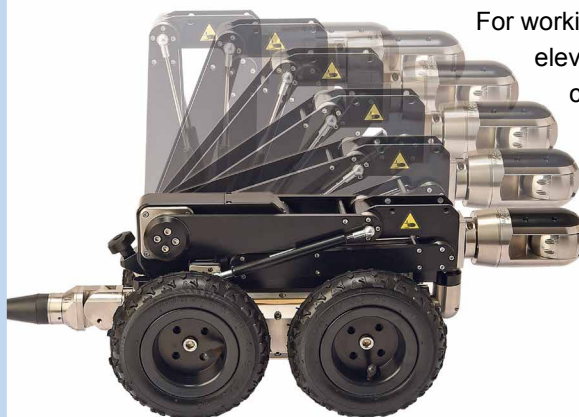


Vehicle installation options

Pearpoint provide a range of standard fixing kits to facilitate permanent or flexible installation of the P350 system in vehicles. Pearpoint also work alongside a range of approved vehicle fitters to deliver custom fit-outs in vehicles that suit customer's needs.

Camera centering in a range of pipe sizes

Camera centering is often a requirement for good quality pipe surveys. The P350 flexitrac range includes small wheels, enabling surveys in pipes as small as 4"/100mm.



For working in larger pipes, adjustable elevators and larger wheels provide coverage of a range of pipe sizes, while the powered elevator enables fine, remote adjustment, ensuring compliant centering in pipes from 12"/305mm to 36"/900mm).

P350 summary specification and options

Environmental:	IP53 to IP55 (Surface Equipment); IP68 to 330' (100M) /11 bar (Downhole Equipment, unless otherwise noted)
Temperature:	(Storage): -4 to 176°F (-20 to 80°C) (Operating): 14 to 122°F (-10 to 50°C)
Power supply:	110-230V ±10%, 50-60Hz ±6%, 1.2kVA. Full sine-wave inverter recommended for vehicular use Generator (if used) to have inverter-type output
Controllers:	P350 command module P350+ command module with integrated battery for pushrod; Optional pendant controller for deployment phase Optionally connect a gamepad controller for vehicle use
Data Connectivity:	USB cable to PC, USB memory stick, Compact Flash card, Bluetooth®
Drums:	Manual drum or powered drum, with cable length options from 500' to 1000'/150m to 305m
Crawlers:	P354 crawler for centered inspection in pipes from 4" to 12"/100mm to 305mm P356 crawler for centered inspection in pipes from 6" to 60"/150mm to 1500mm
Wheels:	Small & medium solid rubber and large pneumatic for conventional/silted pipes Rasp wheels for smooth / relined pipes
Elevators:	Small fixed, small variable, large adjustable and powered
Lighthouse:	Auxiliary 8-LED lighthouse, ≥ 850Lumen
Cameras:	Forward View with 120 Lumen lights Pan/tilt with 210 Lumen lights Pan, Tilt and 10 × optical Zoom with 420 Lumen lights
Approvals:	CE, FCC Standards: EN 61010-1:2010, IEC61010-1:2010

P340 flexiprobe pushrods

The P350 flexitrac crawler system is fully compatible with Pearpoint's P340 pushrod system. Operators can either connect the pushrod directly to the system, or use the P350 controller to control a pushrod.

The P340 flexiprobe offers a range of rods, from ultra-flexible plumbers reels for domestic applications, up to the specialized 500' / 150m P343 reel.



Radiodetection RD7100®DL and DLG locators

Radiodetection's most advanced locating technologies, optimized for the water and drainage industry. With four sonde frequencies, the RD7100DL can be used to trace sondes, including those built into Pearpoint camera systems, at depths up to 30' / 10m.

The RD7100DLG model features integrated GPS and usage-logging to help drive and provide evidence of work done.



Portable, rugged design for on-site use.



Customizable built-in reporting system, creates and exports detailed MSCC5 compliant drain and inspection chamber survey XML reports.



Modular design and pushrod compatibility delivers flexible inspection options.

Global locations

Radiodetection (USA)

28 Tower Road, Raymond, Maine 04071, USA

Toll Free: +1 (877) 247 3797 Tel: +1 (207) 655 8525 rd.sales.us@spx.com www.radiodetection.com

Pearpoint (USA)

39-740 Garand Lane, Unit B, Palm Desert, CA 92211, USA

Toll Free: +1 800 688 8094 Tel: +1 760 343 7350 pearpoint.sales.us@spx.com www.pearpoint.com

Radiodetection (Canada)

344 Edgeley Boulevard, Unit 34, Concord, Ontario L4K 4B7, Canada

Toll Free: +1 (800) 665 7953 Tel: +1 (905) 660 9995 rd.sales.ca@spx.com www.radiodetection.com

Radiodetection Ltd. (UK)

Western Drive, Bristol, BS14 0AF, UK

Tel: +44 (0) 117 976 7776 rd.sales.uk@spx.com www.radiodetection.com

Radiodetection (France)

13 Grande Rue, 76220, Neuf Marché, France

Tel: +33 (0) 2 32 89 93 60 rd.sales.fr@spx.com <http://fr.radiodetection.com>

Radiodetection (Benelux)

Industriestraat 11, 7041 GD 's-Heerenberg, Netherlands

Tel: +31 (0) 314 66 47 00 rd.sales.nl@spx.com <http://nl.radiodetection.com>

Radiodetection (Germany)

Groendahlscher Weg 118, 46446 Emmerich am Rhein, Germany

Tel: +49 (0) 28 51 92 37 20 rd.sales.de@spx.com <http://de.radiodetection.com>

Radiodetection (Asia-Pacific)

Room 708, CC Wu Building, 302-308 Hennessy Road, Wan Chai, Hong Kong SAR, China

Tel: +852 2110 8160 rd.sales.asiapacific@spx.com www.radiodetection.com

Radiodetection (China)

Ming Hao Building D304, No. 13 Fuqian Avenue, Tianzhu Town, Shunyi District, Beijing 101312, China

Tel: +86 (0) 10 8416-3372 rd.service.cn@spx.com <http://cn.radiodetection.com>

Radiodetection (Australia)

Unit H1, 101 Rookwood Road, Yagoona NSW 2199, Australia

Tel: +61 (0) 2 9707 3222 rd.sales.au@spx.com www.radiodetection.com

Radiodetection is a leading global developer and supplier of test equipment used by utility companies to help install, protect and maintain their infrastructure networks.

© 2018 Radiodetection Ltd. All rights reserved. Radiodetection is a subsidiary of SPX Corporation. Radiodetection, Pearpoint, flexitrax, flexiprobe and FlexiSight Manager are trademarks of Radiodetection Ltd. Microsoft, Windows are either registered trademarks or trademarks of Microsoft Corporation in the United States and/or other countries. The Bluetooth word, mark and logos are registered trademarks of Bluetooth Sig, Inc. and any use of such trademarks by Radiodetection is under license. Due to a policy of continued development, we reserve the right to alter or amend any published specification without notice. This document may not be copied, reproduced, transmitted, modified or used, in whole or in part, without the prior written consent of Radiodetection Ltd.