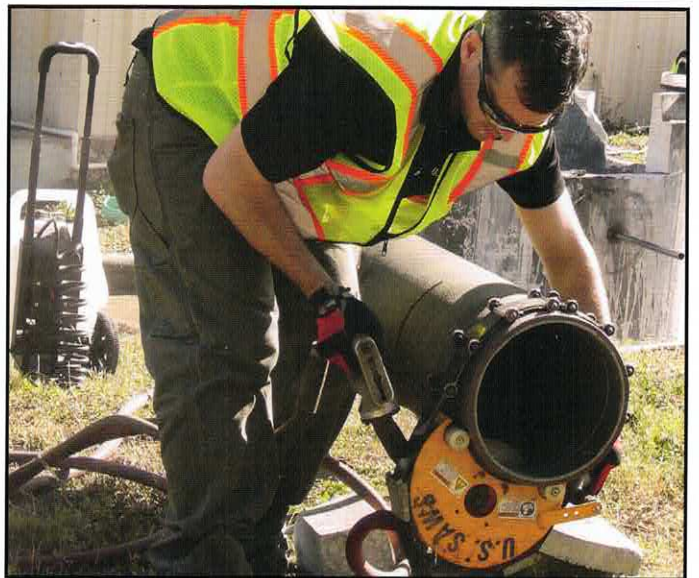
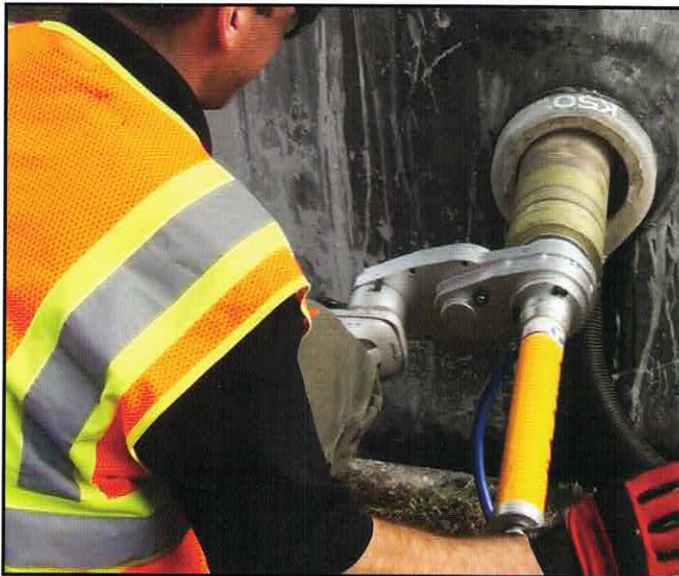


# U.S. SAWS

***Tools for Waterworks, Utility, and Underground***  
**2018 Product Catalog**



**Toll-Free 866-987-7297**  
**[www.ussaws.com](http://www.ussaws.com)**



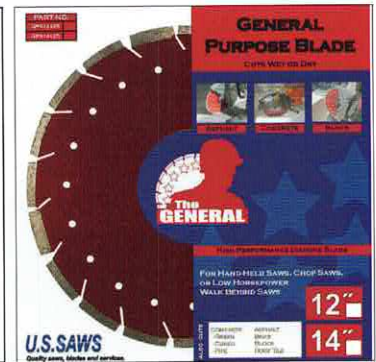
# GENERAL CONSTRUCTION BLADES

## The General

**Applications:** Asphalt, Cured Concrete, Concrete Pipe, Brick, Block, Roof Tile

**Usage:** Handheld Saws & Chop Saws

<b>GPS12125</b>	12x125x1-20mm**
<b>GPS14125</b>	14x125x1-20mm**
<b>GPS16125</b>	16x125x1-20mm**
<b>GPS18142</b>	18x142x1-20mm**



## The Lieutenant

**Applications:** Asphalt, Cured Concrete, Green Concrete, Concrete Pipe, Brick, Block, Roof Tile

**Usage:** Handheld Saws & Chop Saws

<b>GPL12125</b>	12x125x1-20mm**
<b>GPL14125</b>	14x125x1-20mm**
<b>GPL16125</b>	16x125x1-20mm**
<b>GPL14125C</b>	14x125x20mm**



# ASPHALT & CONCRETE BLADES

## Major Asphalt

**Applications:** Asphalt, Asphalt Over Concrete, Green Concrete

**Usage:** Handheld Saws, Chop Saws, and Walk Behind Saws

<b>DAS12125</b>	12x125x1-20mm**
<b>DAS14125</b>	14x125x1-20mm**
<b>DAS16125</b>	16x125x1-20mm**
<b>DAS14125C</b>	14x125x20mm**

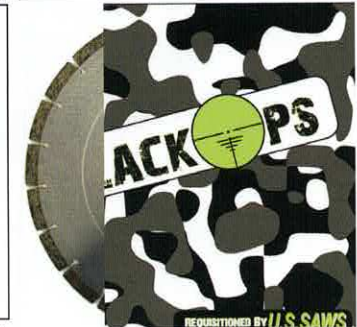


## Colonel Concrete

**Applications:** Concrete Pipe, Cured Concrete, Brick, Block

**Usage:** Handheld Saws, Chop Saws, and Walk Behind Saws

<b>STA12125</b>	12x125x1-20mm**
<b>STA14125</b>	14x125x1-20mm**
<b>STA16125</b>	16x125x1-20mm**
<b>STA18135</b>	18x135x1-20mm**



## Black Ops

**Applications:** Cured Concrete, Green Concrete, Concrete Pipe, Brick, Block, Roof Tile

**Usage:** Handheld Saws & Chop Saws

<b>LCS12125</b>	12x125x1-20mm**
<b>LCS14125</b>	14x125x1-20mm**
<b>LCS14125C</b>	14x125x20mm**





# ABRASIVE WHEELS

## **Tiger Abrasive Combination Blade**

Combination Silicon Carbide / Aluminum Oxide Abrasive Wheel for Cutting Ductile Iron with a Universal Arbor for Use On All Saws

**MN37843UA**

14x1/8x1/20mm Universal Arbor



### Application: Steel

	12x5/32x20mm Aluminum Oxide Wheel	12x5/32x1 Aluminum Oxide Wheel	14x5/32x20mm Aluminum Oxide Wheel	14x5/32x1 Aluminum Oxide Wheel	16x5/32x1 Aluminum Oxide Wheel
<b>Premium</b>	ME16136	ME16137	ME16140	ME16139	ME16204

### Application: Masonry, Non-Ferrous

	12x5/32x20mm Silicon Carbide Wheel	12x5/32x1 Silicon Carbide Wheel	14x5/32x20mm Silicon Carbide Wheel	14x5/32x1 Silicon Carbide Wheel
<b>Premium</b>	ME16156	ME16157	ME16160	ME16159
<b>Value</b>	MA37126	MA37125	MA37146	MA37145

### Application: Ductile Iron

	12x5/32x20mm Combo Wheel	12x5/32x1 Combo Wheel	14x5/32x20mm Combo Wheel	14x5/32x1 Combo Wheel
<b>Premium</b>	ME16168	ME16138	ME16142	ME16149
<b>Value</b>	MA35126	MA35125	MA35146	MA35145



### **Blade Bushing for 20mm Saws**

This adapter is a permanent and reusable bushing to reduce blade arbors from 1" to 20mm  
**Part No.** BUSH0120375 - Diamond Blades

# ECONOMY BLADES



## **Red Raider**

**Applications:** Asphalt, Concrete, Asphalt Over Concrete, Green Concrete

**Usage:** Handheld Saws, Chop Saws, and Walk Behind Saws (low horsepower - 20HP or less)

**GPM14125**

14x125x1-20mm\*\*



## **The Hellfire**

**Applications:** Concrete Pipe, Cured Concrete, Brick, Block

**Usage:** Handheld Saws, Chop Saws, and Walk Behind Saws (low horsepower - 20HP or less)

**STM14125**

14x125x1-20mm\*\*

# CHAIN SAWS & ACCESSORIES

## Features: Pipe Cutting

- Deep cutting - one sided access
- Safer to operate in the trench, no kickback
- Cut through ductile iron, PVC, HDPE, and other pipe materials with ease when using the PowerGrit chain



## Features: Concrete Cutting

- Ideal for square corners (without overlapping cuts)
- Wet cutting reduces hazardous dust

### Air Chain Saw Model ACH-GB16

**Power Source** Gearbox Air Motor  
Minimum Air- 90cfm@90psi  
**Guide Bar** 16" or 20"  
**Weight** 27 lb (With Bar and Chain)

**Part No.** US60466

**AIR**

### Gas Chain Saw Model 695XL-16 F4

**Power Source** 2-Stroke Gas  
**Guide Bar** 16"  
**Weight** 21 lb (With Bar and Chain)

**Part No.** US71021

**GAS**

### Hydraulic Chain Saw Model 890F4

**Power Source** Hydraulic (8GPM or 12 GPM)  
**Guide Bar** 16" or 20"  
**Weight** 27.3 lb (With Bar and Chain)

**Part No.** US72000 (8 GPM-16")

**Part No.** US72010 (12 GPM-16")

**HYDRAULIC**

# ACCESSORIES

**3.5 Gallon  
Manual Pump  
Water Supply  
Part No. US27810-1**



**5 Gallon Battery  
Powered Pump  
Part No. US27815**



**25 Gallon, 35 psi,  
12V Gator Clip  
Hookup  
Part No. IC573285**



**Hydraulic Power Pk.  
5 & 8 GPM  
Part No. US508885  
8 & 12 GPM  
Part No. US261035**





# BELLY SAWS



## Air Belly Saw

<b>Model</b>	8" to 24" Belly Saw
<b>Power Source</b>	Direct Drive Air Motor
<b>RPM</b>	6,000
<b>Max Pipe Dia.</b>	24" Ductile * (16-18" PVC)
<b>Dia. Blades Used</b>	8"
<b>Max Blade Width</b>	.125"
<b>Strap Assembly</b>	8"-24"
<b>Dimensions</b>	8.5"x21"x10.5"
<b>Weight</b>	18 lbs

**Part No.** US60278

**Package Includes:** 8" Blade, 24" Strap Assembly, and Storage Bag

**AIR**



## Hydraulic Belly Saw

<b>Model</b>	Hydraulic Belly Saw
<b>Power Source</b>	Hydraulic
<b>RPM</b>	5,000
<b>Max Pipe Dia.</b>	24" Ductile * (16-18" PVC)
<b>Dia. Blades Used</b>	8"
<b>Max Blade Width</b>	.125"
<b>Strap Assembly</b>	Included (8"-24")
<b>Dimensions</b>	8.5"x21"x10.5"
<b>Weight</b>	22 lbs

**Part No.** US60250

**HYDRAULIC**



## Big Belly Saw - For Large Pipe

<b>Model</b>	Big Belly Saw
<b>Power Source</b>	Direct Drive Air Motor
<b>RPM</b>	5,250
<b>Max Pipe Dia.</b>	48" or 72" Ductile
<b>Dia. Blades Used</b>	12"
<b>Max Blade Width</b>	.125"
<b>Strap Assembly</b>	Up to 48" or 72"
<b>Dimensions</b>	10.5"x24"x12"
<b>Weight</b>	28 lbs

**Part No.** US60280 (48")

**Part No.** US60290 (72")

**AIR**

\*Maximum cutting depth 1-1/4"

## WALK BEHIND SAWS



**Optional Water Tank Kit**

**Part No. US60060**

### Air Walk Behind Saw

<b>Model</b>	FSB-150
<b>Power Source</b>	Gear Box
<b>Air Req. (min)</b>	90 cfm @ 90 psi
<b>RPM</b>	3,300
<b>Max. Cutting Depth</b>	7"
<b>Dia. Blades Used</b>	20" Maximum
<b>Weight</b>	110 lbs

**Part No. US60050**

**AIR**



**Optional Water Tank Kit**

**Part No. US60060**

### Air Walk Behind Saw

<b>Model</b>	FSB-60
<b>Power Source</b>	Direct Drive
<b>Air Req. (min)</b>	90 cfm @ 90 psi
<b>RPM</b>	5,000
<b>Max. Cutting Depth</b>	4-3/4"
<b>Dia. Blades Used</b>	14" Maximum
<b>Weight</b>	90 lbs

**Part No. US60025**

**AIR**



# HANDHELD SAWS (FOR DEMOLITION & UTILITY & PIPE CUTTING)

U.S. Saws' hand-held air-powered saws are environmentally friendly and safe alternatives to traditional gas powered saws for cutting concrete and asphalt.



## Features:

The HS Series saws are durable, direct drive tools. Because there are no extra moving parts, the HS saws offer the most power and durability for heavy construction cutting applications.



### HS-100

<b>Model</b>	HS-100
<b>RPM</b>	5,200
<b>Dia. Blades Used</b>	14"
<b>Air Req. (min)</b>	90 cfm @ 90 psi
<b>Max. Cutting Depth</b>	5"
<b>Weight</b>	25 lbs

**Part No.** US-HS100



### HS-125/HS-150

<b>Model</b>	HS-125, HS-150
<b>RPM</b>	3,300
<b>Dia. Blades Used</b>	14", 18"
<b>Air Req. (min)</b>	90 cfm @ 90 psi
<b>Max. Cutting Depth</b>	5", 7"
<b>Weight</b>	25 lbs

**Part No.** US-HS125

**Part No.** US-HS150

# BATTERY OPERATED VALVE EXERCISER



## **Battery Operated Valve Exerciser**

**Power Source** Lithium Ion 20V Battery  
**Max Depth** 48" / 108"  
**Torque** 400 Peak ft/lbs  
**Weight** 55 lbs

**Part No.** US75005



**Hydrant Kit Includes:** Power head with hard case, batteries, hydrant key, and modified handle

**Part No.** US75001

## **Hydrant Adapter**

Designed to fit most pentagon style hydrant nuts

**Part No.** US75610



## **OS&Y Adapter** (Outside Stem & Yoke)

Designed to fit post indicator and wheel valves  
Includes 1 ft shaft extension

**Wheel Adapter**  
**Part No.** US75608  
**Driver Part No.** US75609





## DUCTILE IRON BEVELLING TOOLS

### Features:

- You can bevel the ductile iron while you cut
- Adapters are available for nearly every saw on the market
- Adapter allows for the attachment of the PVC beveller at its center, maximizing its versatility



Under Flange Model

### Under Flange Model Ductile Iron Beveller

**Part No. US24746** (Fits Husqvarna)

**Part No. US24747** (Fits STIHL)



## FEATURED ACCESSORY - PIPE ROLLERS

### Features:

Roll your pipe onto a pair of Roller Buddies and free yourself from having to roll your pipe on ill-suited ground.

Tasks like cutting, beveling and welding suddenly become one man operations.

- Durable aluminum construction
- Maximum pipe capacity: 18"
- Minimum pipe capacity: 4"



# CORE BITS & ACCESSORIES



Premium Bits for Core EZ	
3"	CBB0300M
4"	CBB0400M
5"	CBB0500M
6"	CBB0600M
7"	CBB0700M
8"	CBB0800M
10"	CBB1000M

Premium Conventional* (1-1/4-7 thread)			
2"	CBA020031P20W	6"	CBA060031P20W
2.5"	CBA025031P20W	6.5"	CBA065031P20W
3"	CBA030031P20W	7"	CBA070031P20W
3.5"	CBA035031P20W	8"	CBA080031P20W
4"	CBA040031P20W	10"	CBA100031P20W
4.5"	CBA045031P20W	12"	CBA120031P20W
5"	CBA050031P20W	14"	CBA140031P20W



**Catch Flanges**

Flange set for use in vertical drilling applications to hold the machine.

**Part Number:**  
**Varies by Size**



**Angle Drilling Washer**

Special washers for drilling at an angle.

**Part Number:**  
**US28273**



**Slurry Ring**

Slurry water for clean coring removal.

**Part Number:**  
**US28261 - 6inch**  
**US28263 - 10inch**



**Water Tank Kits**

3.5 gallon manual water pump.  
**Part Number:**  
**US60410-2**

5 gallon battery powered pump.  
**Part Number:**  
**US27815**





# MAGNETIC LIFTING SYSTEMS

## Features:

- Versatile equipment with the power for heavy lifting while avoiding back injuries associated with conventional methods of lifting manhole covers
- Collapsible for easy storage and transport
- Steel or lightweight aluminum construction
- Various sizes available depending on lifting needs
- Dual position lifting points to provide the power to break loose the most stubborn covers



### Curved Aluminum Heavy Duty Dolly with 8" Hard Wheels

36" x 12 1/2" x 11-5/8"  
(Folded Dimension)

**Part No. US30185**  
(with Heavy Duty Magnet)

**Part No. US30186**  
(with Supreme Duty Magnet)



### Curved Steel Heavy Duty Dolly with 8" Hard Wheels

36" x 12 1/2" x 11-5/8"  
(Folded Dimension)

**Part No. US30550**  
(with Heavy Duty Magnet)

**Part No. US30555**  
(with Supreme Duty Magnet)

**Part No. US30200**  
(with Mega Duty Magnet)



### Supreme Heavy Duty Dolly with 10" Hard Wheels and Extension Handles

48.5" x 16" x 11.5"  
(Folded Dimension)

**Part No. US30160**  
(with Supreme Duty Magnet)

**Part No. US30170**  
(with Mega Duty Magnet)

### Retracted Handle



### Extended Handle



**Heavy Duty Magnet - 300 lbs**

**Supreme Duty Magnet - 600 lbs\***

**Mega Duty Magnet - 900 lbs\***

**\*Material thickness and surface contact can vary actual lifting capacity**

# HANDHELD MAGNETIC LIFTING SYSTEMS



**1. Attach**



**2. "Break"**



**3. Remove**



**4. Replace & Release**

Unit	Lift- ing Cap.	Mag. Used	Chassis	Unit Weight	Base Meas.	Unit Height	Part Number
<b>Bo Bop</b>	25 lbs	1	Orange	4 lbs	4" x 2"	34"	US30298
<b>Non-Sparking Bo Bop</b>	25 lbs	1	Orange	4 lbs	4" x 2"	34"	US30299
<b>Break 'N Take</b>	250 lbs	4	Orange	15 lbs	10" x 5"	34"	US30188
<b>Robotron</b>	300 lbs	3	Yellow	15 lbs	13" x 6"	34"	US30178RT
<b>Utility Robotron</b>	300 lbs	3	Yellow	15 lbs	13" x 6"	34"-46"	US30178UTILITY
<b>4 Mag Robotron</b>	300 lbs	4	Yellow	18 lbs	16" x 7"	34"	US30188RT

